



HODSONS

ASKING PRICE

£180,000

Croft Avenue

Altofts, WF6 2JW



HODSONS

PROPERTY SUMMARY

A three bedroom mid-terraced property with off-road parking and enclosed rear garden. Ideal for first-time buyers or a young family, located in the popular Altofts area with excellent commuter links.

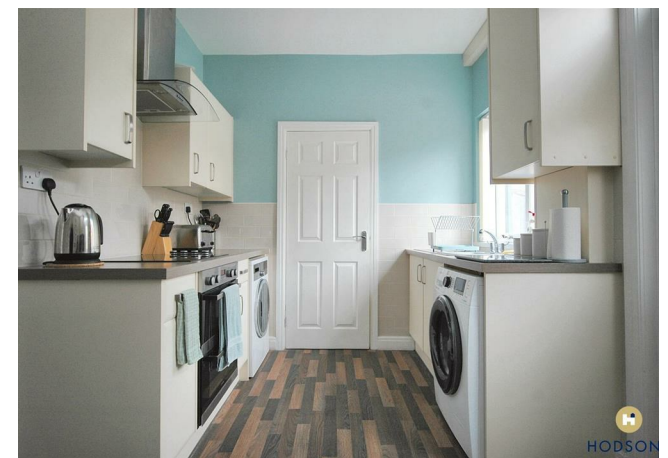
3



2

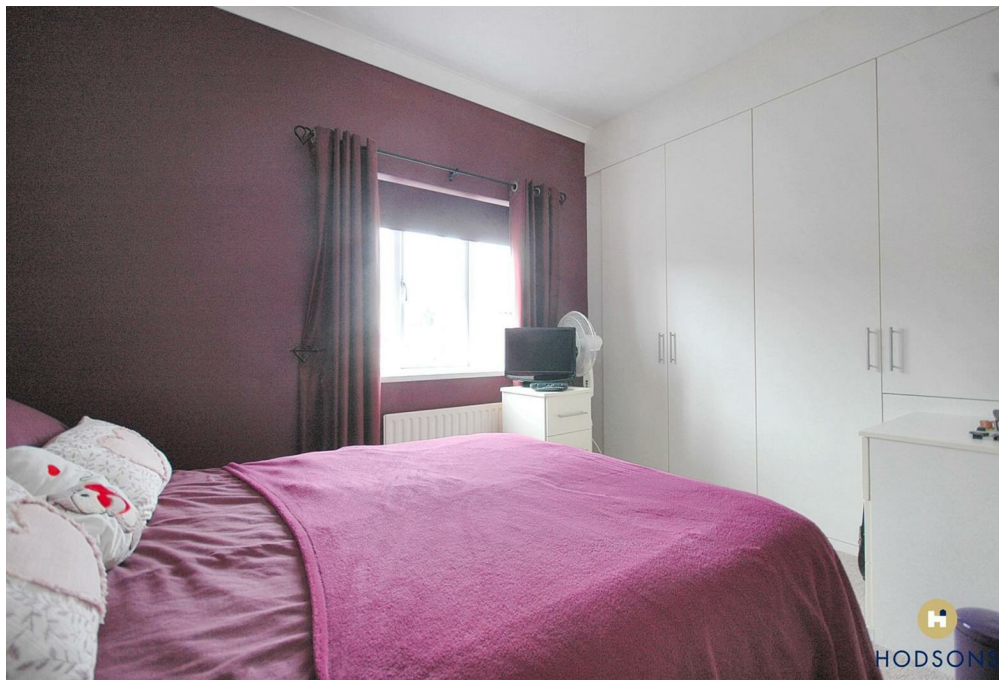


1





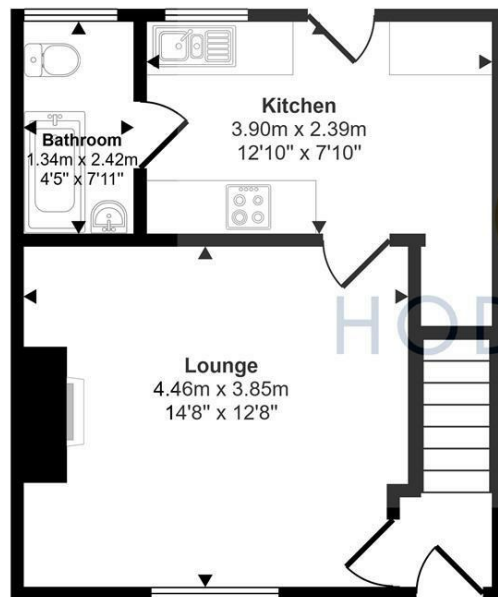
HODSONS



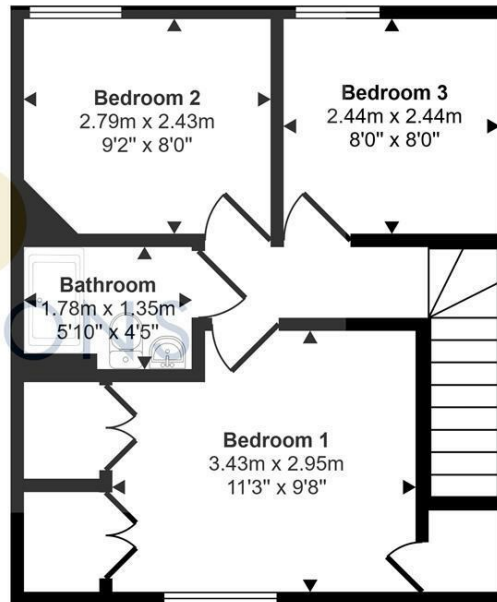


HODSONS

Approx Gross Internal Area
69 sq m / 743 sq ft



Ground Floor
Approx 34 sq m / 368 sq ft



First Floor
Approx 35 sq m / 375 sq ft

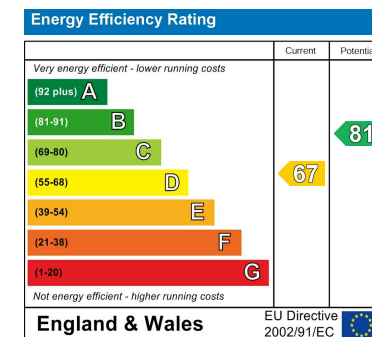
This floorplan is only for illustrative purposes and is not to scale. Measurements of rooms, doors, windows, and any items are approximate and no responsibility is taken for any error, omission or mis-statement. Icons of items such as bathroom suites are representations only and may not look like the real items. Made with Made Snappy 360.

LOCAL AUTHORITY
Wakefield

TENURE
Freehold

COUNCIL TAX BAND
A

VIEWINGS
By prior appointment only



Agents Note: Whilst every care has been taken to prepare these particulars, they are for guidance purposes only. All measurements are approximate and are for general guidance purposes only and whilst every care has been taken to ensure their accuracy, they should not be relied upon and potential buyers/tenants are advised to recheck the measurements



OFFICE ADDRESS
37-39 George Street
Wakefield
West Yorkshire
WF1 1LX

OFFICE DETAILS
01924 200544
wakefield@hodsonsproperty.co.uk
www.hodsonsproperty.co.uk